



# *the Magic City Sale*

**APRIL 13, 2018**

7:00 p.m. at the Tropical Park Ronald Reagan  
Equestrian Center, Miami, Florida

*Join us in Miami ...*  
**GATEWAY  
TO THE  
WORLD**



# *the Magic City Sale*

**APRIL 13, 2018**

7:00 p.m. | Tropical Park Ronald Reagan Equestrian Center | Miami, Florida

**MAGIC CITY SALE MANAGEMENT TEAM**

Kelvin Moreno, Cattle Show Manager | 1.863.444.8745  
kelvin@morenoranches.com | 17 Virginia Circle, Moreno Estate, Venus, FL 33960  
Go to [www.miamicattleshows.org](http://www.miamicattleshows.org) for an online catalog

Join us in Miami ...  
**GATEWAY  
TO THE  
WORLD**

Dear Friends,

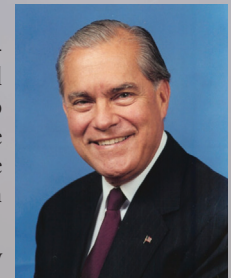
Welcome to Miami-Dade County, the "Capital-of-the Americas," where people gather to enjoy and do business, in a beautiful and safe city where everyone feels "at home." We are honored to host another year of the Miami International Agriculture, Horse and Cattle Show. Attendees at the Show and the Magic City Sale will represent over twenty countries and fifteen states, bringing an exciting cultural melting pot of people to these great events.

With high standards, we take great pride in inviting you to view the exceptional offerings in our ninth annual Magic City Sale catalogue. The quality of the genetic materials and live animals presented is extraordinary. I believe this will be our best auction to date.

As always, the proceeds from the Miami International Agriculture, Horse and Cattle Show will go to the South Florida Autism Charter School, a school for 189 boys and girls affected by this terrible disorder located in Miami-Dade County. This high quality "open school" for children of all creeds and colors is doing excellent work and we are grateful to be able to give back in this way to keep the doors of their educational facility open. To this date, MIAHCS has given SFACS over half-a-million dollars. From all of us here in Miami-Dade County, thank you, thank you very much for your continued support. I look forward to seeing you at the Show and the Sale.

*Sincerely, Sen. Javier D. Souto*

County Commissioner, Miami-Dade County, Florida  
Chairman of the Event





Greetings from the Magic City,

Miami is truly a "Beta World City" functioning as one of the world's most important centers of commerce, finance, and corporate headquarters. Its geographical location allows for strong sustained opportunity within our viable international business community.

This international event, designed to advocate for and display the best of Florida's second largest industry, agriculture. It's annually and appropriately held in Miami-Dade County, frequently known as the Gateway to the Americas!

The Magic City Sale has become an impactful and significant part of the Miami International Agriculture & Cattle Show (MIACS). After nine years, this sale continues to feature superior cattle, exclusive semen and elite genetics from the most progressive and reputable cattle programs in the United States. This is an opportunity, whether you are a novice agribusiness entrepreneur or are deeply established in the field, to enhance your program with the highest quality selections chosen by a detailed set of criteria.

We encourage you to invest in the future pioneers of MIACS. These offerings can not only help expand your business, but are an equally impressive example of the hard work and dedication that is encouraged to continue in our county programs. We invite you to review our 2018 Magic City Sale Catalog, and guarantee you will love what you see!

For more information related to MIACS, please visit our website at [www.MiamiCattleShow.org](http://www.MiamiCattleShow.org) or email us at [Show@morenoranches.com](mailto:Show@morenoranches.com). For buyer registration or inquiries related to the Magic City Sale, please e-mail us at [Sales@morenoranches.com](mailto:Sales@morenoranches.com) or call us directly at 305.218.1238.

We look forward to seeing you in the Magic City on sale day!

At your service,

*Kelvin Moreno, MIACS Cattle Show Manager*  
[www.morenoranches.com](http://www.morenoranches.com)

## Sale Terms & Conditions

**TERMS:** All cattle/genetics must be paid for immediately after the sale. Checks should be made payable to Moreno Firms, Inc. Cattle/genetics will not be released until proper settlement has been made.

**SPECIAL TERMS:** (cattle/genetics for export) Lots and genetics that are sold for export must be paid for at the time of the sale. There will be a representative of a forwarding company on hand to assist in this matter. It will be the responsibility of the buyer of these cattle/genetics for export to make arrangements with the seller for the care of the lots or genetics after the sale. Buyers will be responsible for any layover costs following the sale.

**EMBRYOS ...** Each package of three embryos guarantees one 60-day pregnancy if transferred within 90 days of purchase. All procedures must be performed at Trans Ova Genetics, and using Trans Ova Genetic's recips, or the guaranteed minimum will be voided. Lots with packages of two embryos have no guaranteed minimums.

**IVF PROCEDURE ...** Each IVF PROCEDURE has a guaranteed minimum of five transferable embryos. Buyer will receive all additional embryos of the procedure, should there be any. Buyer pays for all flushing costs, as well as any procedure related expenses. All procedures must be performed at Trans Ova Genetics, or the guaranteed minimum will be voided. If reverse sorted or sexed frozen semen is used to fertilize, the guaranteed minimum will be voided.

**SEMEN ...** The utilization of semen in reverse sorting technology needs to have a ratio of 25 to 30 oocytes when sorted per 1 unit of semen, on average and depending on the quality of the oocytes.

**EXPORTS:** Cattle/genetics sold for export to foreign countries must, by state law test for diseases flagged by the country receiving the animal after the sale is made. The buyer will be responsible for this testing.

**BREEDERS GUARANTEE:** Every lot in this sale is, to the best of the seller's knowledge, sound and free of any disease. Pregnant cows and cows with calves are considered breeders without further guarantee.

**HEALTH:** All necessary health papers will be provided for the purposes of shipping cattle and genetics anywhere in the U.S.

**HANDLING:** As the sale takes effect, all lots are under the buyer's risk.

**LIABILITIES:** All persons who attend the sale do so at their own risk. Miami-Dade County, Moreno Firms, Inc. and MIACS, including the sale manager, assume no liability, legal or otherwise, for any accidents that may occur. Seller accepts no liability for the lots after they are sold. Insurance will be available at the sale for cattle/genetics upon the buyer's request.

**ANNOUNCEMENTS:** Any announcements from the auction block will take precedence over the printed material, this catalog, and all other printed advertisements.

**DISPUTES:** The auctioneer in charge will settle any bid disputes. The decision of the auctioneer on such matters is final.

**CONTRACT:** The above terms and conditions shall constitute a contract between the buyer and the seller of each lot sold.

**TRANSPORTATION:** Free transportation of sale heifers to central locations in Texas, Louisiana, Mississippi, and North Florida.

**SEMEN RELEASE:** Upon payment, semen lots will be released from their respective storage facilities, and must be claimed within 30 days of the sale. Sale management is not responsible for semen lots not claimed within the designated time.

### THURSDAY, APRIL 12TH

7:00 a.m. - 3:00 p.m. Open Show Cattle Arrival and Check-In

### FRIDAY, APRIL 13TH

7:00 a.m. - 1:00 p.m. Junior Show Cattle Arrival and Check-In  
 8:00 a.m. - 2:00 p.m. Trade Show Exhibit Set-Up  
 9:00 a.m. Santa Gertrudis Beef Cattle Show  
 10:00 a.m. International Brangus/ Red Brangus Breeders Association Beef Cattle Show  
 6:00 p.m. - 7:00 p.m. International Cocktail Reception  
 7:00 p.m. Magic City Brahman Genetics & Heifer Sale

### SATURDAY, APRIL 14TH

9:00 a.m. - 9:00 p.m. Gates Open to the Public  
 9:00 a.m. Junior Brahman Showmanship Contest  
 11:00 a.m. Junior Brahman Show Red & Gray  
 11:00 a.m. - 5:00 p.m. Trade Show Open  
 1:00 p.m. American Angus Beef Cattle Show  
 3:00 p.m. United Beefmaster Show

### SUNDAY, APRIL 15TH

9:00 a.m. - 5:00 p.m. Gates open to the public  
 Horse events during the day  
 9:00 a.m. American Brahman Breeders Association Sanctioned Red & Gray Show  
 11:00 a.m. - 5:00 p.m. Trade Show Open  
 5:00 p.m. Junior Show Cattle Release

### MONDAY, APRIL 16TH

7:00 a.m. Show Cattle Release

**This sale will be broadcast live at ...  
 DVAUCTION.COM**

**DVAuction**  
*Broadcasting Real-Time Auctions*

### HOST HOTEL ... Spring Hill Suites, Airport South

Phone: 305.265.0144 · Fax: 305.265.6213 · [www.marriott.com/mialg](http://www.marriott.com/mialg)  
 6700 NW 7th St · Miami, FL 33126  
 Group Rate: \$99/night (group code: Miami Cattle Show)

### SALE DAY NUMBERS ...

Kelvin Moreno .....305.218.1238  
 Randy Ratliff.....615.330.2735  
 Cody Lowderman (Auctioneer) ..... 309.313.2171





## 1 WR Valorie PP 6/6

ABBA# C 951178 | 06.09.16 | 6/6 | Cow

+MR WINCHESTER MAGNUM 999  
SRS PRIVATE PRACTICE 932  
+SRS MISS LUCY 795  
MR MK JACKPOT  
WR JACKIE VALENTINO 1/4  
WR VALORIE SUVETTE 4/7  
+HK PASSPORT  
+5M MISS MAGNUM MOLLY  
SRS MR. RED MAX 525  
+SRS MS ROSE 606  
+TTT MR. TEXAS LOTTO 670  
+MS MK LOJA DOBLE 5/564  
+DB VALENTINO 48/3  
WR MISS SUVETTE 10/3

BW 2.6  
WW: 14.0  
YW: 23.7  
MILK: 7.4

WR Valorie PP 6/6 is one exciting red Brahman female. She is the daughter of SRS Private Practice 932 and her maternal grand father is Mr. MK Jackpot from WR Valorie SUVette 4/7. Take a look at the future potential that she appears to have. She is so long and extended up through her front end it is crazy. She is very long, level and streamlined down her top line out of from her hooks to her pins. We admire her structural correctness and fluidity of movement. Buy into a female here that has all great things stacked in her favor.

*Consigned by Watts Ranch*



## 2 Ms. Lady Roshie 610/1

ABBA# C 958717 | 03.04.17 | 610/1 | Cow

MR. JS/FONTENOT 937  
MR. FONTENOT 333  
MISS FONTENOT 942  
S BAR MR. 166/1  
MISS B-F 48/6  
JDH MISS CHRISTINE MANSO  
HK BLUEPRINT  
MISS FONTENOT 872  
+MR BF IRON MAN 55/7 ET  
MISS FONTENOT 67  
JDH BROSS MANSO  
S BAR MISS 407/7  
(+)JDH DATAPACK MANSO  
JDH LADY BRENA MANSO

BW -0.2  
WW: 1.4  
YW: 10.5  
MILK: 15.6

Here is a gorgeous daughter of the 2016 ABBA International Grand Champion Red Brahman bull Mr. Fontenot 333 "Rufus." His first calves are hitting the show ring and the marketplace at a fast pace and are being well accepted in both scenes. Her dam is the powerful donor Miss B-F 48/6, a proven and prolific daughter of S Bar Mr. 166/1, a proven son of JDH Bross Manso. This red Brahman heifer is picture perfect and is one that we think the world of. She is nearly perfect down her topline, well extended up through her head and neck and very sound in her structure.

*Consigned by Raegan Sumrow*



3 Ms. Lady Syra 524/1

ABBA# C 957220 | 03.14.17 | 524/1 | Cow

+JDH MR ELMO MANSO	+JDH SIR LAWFORD MANSO	BW	-0.3
JDH SIR STRATTON MANSO 823/4	\$JDH LADY ELLIS MANSO	WW:	1.7
+JDH LADY SANDY MANSO	(+JDH MADISON DE MANSO	YW:	22.5
	JDH LADY EARLINE MANSO	MILK:	35.5
	(+JDH MADISON DE MANSO		
+JDH SIR LAWFORD MANSO	JDH LADY BARA MANSO		
+JDH LADY MIRANDA MANSO	+MR. V8 700/3		
JDH MS GRAND MANSO 87	JDH LADY GRANDE MANSO 34		

One thing that is certain with this heifer is she is bred to be a great one! She is a daughter of the popular sire JDH Sir Stratton Manso 823/4 and is from the prominent donor +JDH Lady Miranda Manso. This heifer is very well made, clean in her lines and very long and level down her top line and from her hooks to her pins. If you want to consider a true breeding piece then take a strong look at Ms. Lady Syra 524/1.

Consigned by Dyess Farms

SELLING CHOICE

4A FEMALE

4B FEMALE

+JDH MR ELMO MANSO	+JDH SIR LAWFORD MANSO	BW	-
JDH SIR STRATTON MANSO 823/4	\$JDH LADY ELLIS MANSO	WW:	-
+JDH LADY SANDY MANSO	(+JDH MADISON DE MANSO	YW:	-
	JDH LADY EARLINE MANSO	MILK:	-
	JDH BROSS MANSO		
S BAR MR. 166/1	S BAR MISS 407/7		
MISS B-F 48/6	(+JDH DATAPACK MANSO		
JDH MISS CHRISTINE MANSO	JDH LADY BRENA MANSO		

These heifers are sired by JDH Sir Stratton Manso that is used exclusively by Moreno Ranches and J.D. Hudgins-Locke Division. This young son of the national champion and internationally proven +JDH Elmo Manso has produced extremely well for Moreno Ranches and others resulting in winners and top sellers both in the U.S. and Australia.

Their dam, Miss B-F 48/6, has the pigment you will appreciate and the structural correctness we all so desire in our females. She is massive in her foot size and heaviness of bone, and so fluid in her movement. We admire her depth of body, spring of rib, and her brood cow look. She is so bold sprung, long and level down her top, and very prominent in her stance. She is sired by a son of JDH Bross Manso and from a daughter of JDH Datapack Manso. She is a game changer that is proven by her progeny. She has been a remarkable donor in the Moreno Ranches program and based on her progeny she is very deserving of a prominent title.

Consigned by Dyess Farms



JDH SIR STRATTON MANSO 823/4



MISS B-F 48/6





**5 Ms. Run The Show 674/1**

ABBA# C 963290 | 07.15.17 | 674/1 | Cow

MR. JS/FONTENOT 937  
MR. FONTENOT 333  
MISS FONTENOT 942  
  
MORENO MR. HERCULES  
MORENO MS. CAMILA  
MISS V8 652/5

HK BLUEPRINT  
MISS FONTENOT 872  
+MR BF IRON MAN 55/7 ET  
MISS FONTENOT 67  
MSP SIR DUBO BOY 749  
MDS LADY BANO PAT 10  
JDH MR. MANSO 288/1  
MISS V8 174/5

BW	-0.1
WW	2.4
YW	16.6
MILK	26.3

Ms. Run the Show 674/1 is appropriately named as the new owner will find out she will definitely run the show. She is one exciting and striking show heifer in the making. We love and admire her length of head and neck, as well as her strong topline and her structural correctness. This heifer is made nearly perfect in her design and just happens to be sired by the 2016 ABBA International Grand Champion Red Brahman bull "Rufus" and from a powerful donor Moreno Ms. Camila.

*Consigned by* Mi Tierra Ranch



**6 Mr. Fit 731**

ABBA# B 963315 | 10.06.17 | 731 | Bull

MR. JS/FONTENOT 937  
MR. FONTENOT 333  
MISS FONTENOT 942  
  
+JADL REYTE  
MISS MS. LADY MADONA CALVER  
+JDH LADY CALVER MANSO

HK BLUEPRINT  
MISS FONTENOT 872  
+MR BF IRON MAN 55/7 ET  
MISS FONTENOT 67  
(+)JDH MADISON DE MANSO  
(JERS CALANDRIA TE)  
JDH MR DWAYNE MANSO  
JDH LADY KAT MANSO

BW	-0.1
WW	4.8
YW	30.6
MILK	50.6

His dam is the featured donor Moreno Ms. Lady Madona Calver and he is sired by the 2016 ABBA International grand champion red Brahman bull "Rufus. This young calf is very well made and appealing from the side profile. We admire his temperament, his structural soundness and the amount of mass and power that he has. Mr. Fit 731 has the desired look to go with his prominent pedigree and will certainly enhance any program for the better.

*Consigned by* Mi Tierra Ranch



7 Mr. Power It 685

ABBA# B 957000 | 01.02.17 | 685 | Bull

+MR. V8 702/3	+JDH MR. RHA ELY MANSO	BW	0.0
+MR. V8 777/4	QUEEN OF SUGARLAND 175	WW:	1.5
+MISS V8 666/3	(+)MR. V8 202/3	YW:	15.9
	+MISS V8 617/2	MILK:	29.2
(=)JDH PRESCOT MANSO	(+)JDH MADISON DE MANSO		
=JDH LADY SUSIE MANSO	+JDH LADY NEL MANSO		
JDH LADY BADGETT MANSO	JDH BROTHER PRAT MANSO		
	JDH MISS DELILAH MANSO		

Talk about a breeding bull that is ready to get to work, here he is: Mr. Power It 685. He is a gray Brahman beef bull that is sired by +Mr. V8 777/4 and from the elite donor =JDH Lady Susie Manso, a proven daughter of (=) JDH Prescott Manso. We admire this bull for his soundness from the ground up. He is long and extended up through his head and neck and very long and level down his topline. We appreciate his testicle size and overall mass that he has. Buy into a true breeding bull that will make a big influence on any cowherd.

Consigned by Mi Tierra Ranch



8 Mr. Sir Maka 707

ABBA# B 959600 | 05.28.17 | 707 | Bull

JDH MR TODD MANSO	(=)JDH WESTIN MANSO	BW	-0.2
JDH MR MANSO 734/6	JDH MISS CLOVA MANSO	WW:	3.9
JDH LADY MANSO 382/5	JDH MR BERTRAM MANSO	YW:	24.3
	JDH LADY MANSO 376/9	MILK:	38.9
+MR. V8 287/5	+MR. V8 777/4		
MISS V8 765/6	+MISS V8 611/4		
MISS V8 997/5	+MR. V8 901/4		
	+MISS V8 653/5		

This gray herd sire prospect is one that has so many positive traits stacked in his favor. He is a son of JDH Mr. Manso 734/6 and from the donor Miss V8 765/6. This young herd sire prospect is picture perfect from the side profile, soft in his pasterns and very clean and appealing up through his head and neck.

Consigned by Lustaneda Farm





EMBRYOS



#GRDA Mr Laureano Del Alba Te



JDH Lady Coy Manso



JDH Goudeau Manso 174/0



JDH Lady Brenna Manso

9 Three Conventional Embryos

Selling one package of three conventional embryos.

JDH MR MANSO 731/5	JDH SALTILLO MANSO	SIRE	DAM
#GRDA MR LAUREANO DEL ALBA TE	JDH LADY MANSO 17/4	BW	0.1 0.1
(JAGJ SELENA)	TTT MR RAMBO 30	WW	1.6 3.3
	(JAGJ CHORREADA)	YW	19.1 30.3
JDH SIR KENNY MANSO	(+)JDH MR WOODMAN MANSO	MILK	29.1 46.4
JDH LADY COY MANSO	JDH LADY REGAL MANSO		
=JDH LADY JOSIAH MANSO 505/7	(=)JDH JOSIAH MANSO		
	JDH LADY GWENITH MANSO		

Admired by the many prominent cattlemen who have seen him, #GRDA Mr Laureano Del Alba Te 114/1 was crowned as the National Champion Bull of Mexico two years in a row. This incredible sire has already begun to secure his reproductive legacy, as three of his progeny won championships at the 2015 National Show of Mexico this past December. He is appreciated so much from the ground up, as he is massive in his foot size and very soft and flexible in his pasterns. He is very fluid in his movement and carries himself extraordinarily well when on the move. From a side profile, this prominent herd sire is nearly perfect, as he is so level down his top line and as square and level from his hooks to his pins. We admire his amount of rib shape and depth of flank, combined with a tremendous amount of thickness and power.

Consigned by Ganderia San Rafael

10 Two RSF Embryos

Selling one package of two RSF embryos.

JDH MR. MANSO 362/1 (362/1)	JDH BROSS MANSO (949/2)	SIRE	DAM
JDH GOUDEAU MANSO 174/0	JDH LADY MANSO 337/9 (337/9)	BW	0.0 0.5
JDH LADY MANSO 625/3 (625/3)	JDH MR. MANSO 13/2 (13/2)	WW	3.9 5.2
	=JDH LADY SWATTER MANSO (68/8)	YW	22.3 4.7
(+)JDH DATAPACK MANSO (563/5)	+TTT MR. SUVA CRATA 450 (450)	MILK	34.1 5.7
JDH LADY BRENNNA MANSO	JDH LADY MIL MANSO (780/4)		
JDH KENNEWICK MANSO (150/3)	(=)JDH SARASOTA MANSO (880/2)		
	JDH GRAHAMMIE DE MANSO (707/2)		

He is a sire with a complete outcross pedigree to most established lines that stem from a very maternal line of cow families. He is a powerful performance bull and his progeny are at the top in terms of weaning and performance.

He is massive in terms of performance, super sound in his structure and very prominent in his stance. JDH Lady Brenna Manso, is one of the leading Moreno donors; an own daughter of the famed register renown JDH Data Pack Manso and from a JDH Sarasota Manso daughter. Those that have seen her have been amazed with her mass and overall capacity. She is extra-long bodied and very maternal in her appearance. She continues to amaze us in her production.

Consigned by Mi Tierra Ranch





+SRS Mr. Troubador 933



+Miss MK 7/634



Moreno Ms Lady Reba 112,  
full sib to Lot 11 embryos.

## 11 Three Conventional Embryos

Selling one package of three conventional embryos.

+MR WINCHESTER MAGNUM 999	+HK PASSPORT
+SRS MR. TROUBADOR 933	+5M MISS MAGNUM MOLLY
+SRS MISS LUCY 795	SRS MR. RED MAX 525
	+SRS MS ROSE 606
	5M MR RINGER ROHO VERNON
+MR MK VERNON 349/1	+MK LOJA 137
+MISS MK 7/634	+MR. HV MAX 892/8
MISS MK SUVA ROJA 9/345	MK RED SUV 149

	SIRE	DAM
BW	3.0	1.9
WW:	11.4	9.5
YW:	18.8	18.8
MILK:	8.5	7.9

These embryos are sired by +SRS Mr. Troubador 933, the International and National Champion, Register of Renown bull, and sire of champions globally. Troubador recently sired, in addition to 39 other point earners, the 2016 National Champion and 2017 ABBA Red Show Bull of the Year, DF Mr. Butterbean.

The dam to these elite embryos is equally as impressive, being the dam of Moreno Ms. Lady Reba 112- the National Champion, Reserve International Champion, ABBA Show Cow of the Year as well as a number of other titles. +Miss MK 7/634 combines the influence of the National and International Champion +MK 349/1 and the National Champion +HV 892/8. In addition 7/634 is a proven producer having produced three point earning offspring in ABBA Open Shows.

*Consigned by* Ganaderia San Rafael



EMBRYOS

Mr. 'Rufus' Fontenot 333



BB LP Wham Bam 913



Moreno Ms. Lady Ragatta 616/1,  
full sib to Lot 12 embryos.

12 Three RSF Embryos

Selling one package of three RSF embryos.

MR. JS/FONTENOT 937 (937)  
**MR. 'RUFUS' FONTENOT 333**  
MISS FONTENOT 942 (942)  
  
+MR WINCHESTER MAGNUM 999  
**BB LP WHAM BAM 913 (ET)**  
+SRS MS CAMINO 811 (811)  
  
HK BLUEPRINT (575)  
MISS FONTENOT 872 (872)  
+MR BF IRON MAN 55/7 (ET) (55/7)  
MISS FONTENOT 67 (67)  
+HK PASSPORT (777)  
+5M MISS MAGNUM MOLLY (167)  
SRS MR. RED MAX 525 (525)  
SRS MS DEJA VU 630 (630)

	SIRE	DAM
<b>BW</b>	0.0	0.4
<b>WW</b>	2.3	4.3
<b>YW</b>	16.9	18.4
<b>MILK</b>	27.1	29.1

This will be the last opportunity in the United States to purchase embryos from BB LP Wham Bam 913. Here is a half-sister to the 2009 National Champion female, BB LP Enchanted Moment 910. She was unbeatable when she was being shown and was recognized as one of the greatest show females to ever exist. BB LP Wham Bam 913 is extreme in her heaviness of bone, foot size and has a world of rib shape and capacity. She is extremely big footed, soft in her pasterns and very sound in her structure. Her daughter was a top seller in the '15 Moreno Ranches Catalyst 3 sale and was purchased by Double A Ranch in Texas. Other progeny are highlighted in elite programs throughout Mexico, Guatemala, Panama, Nicaragua and Ecuador. "Rufus" is said by many to be one of the truly great Red Brahman bulls to come around in a long time. We firmly believe he can make a huge impact with the flawless traits that he has. He very confidently walked into the prestigious 2016 ABBA International Show and dominated as well as captivated the audience and the three judges. He is massive in his foot size, soft in his pasterns and very fluid in his movement. This stout made and heavily muscled beef bull is extremely level and strong down his top and out through his hooks to pins. We appreciate his depth of flank, volume and capacity. Only one bull of this level comes along in a lifetime and we are more than excited to see the uniformity of his calf crop as time goes on.

*Consigned by Ganaderia San Rafael*



# 13 Two Conventional Embryos

Selling one package of two conventional embryos.

JDH MR KABRAM MANSO	+JDH WOODSON DE MANSO	(+)JDH MR WOODMAN MANSO	SIRE	DAM
	JDH LADY EUGAULA MANSO	JDH LADY IRMA MANSO	BW	-0.7 1.1
		(+)JDH SIR LIBERTY MANSO	WW	13.5 9.1
		JDH LADY HALONA MANSO	YW	24.6 16.0
+GS MS MULHIM MANSO 314	MSP MR. MULHIM MANSO 594	MSP MR. MULHIM MANSO 387	MILK	0.1 7.0
	+GS MISSY DIDOR 277	=MSP LADY DUBO MANSO 354		
		+GS EMPEROR DIDOR 135		
		+GS EMPRESS DIDOR 54		

This will be the last opportunity in the United States to purchase embryos from +GS MS Mulhim Manso 314.

These embryos are sired by one of the top Moreno Ranches junior gray herd sires, JDH Mr Kabram Manso 434/8. He was purchased as a yearling from the Bob Hudgins private herd. He is an amazing son of JDH Woodson De Manso 206/7 and from a Liberty bred cow. He is moderate in his design, big footed, super deep bodied, masculine in his head structure, and has proven to be a low birth weight bull that produces very feminine and correct type females.

Their dam, +-GS Ms. Mulhim Manso 314, continues to make her mark in the breed and for sure at Moreno Ranches. 314 was a landmark donor in the Bennett Farms program in Choudrant, LA. She has produced 19 females and five bulls in their program and has entered Register Of Renown status in the ABBA registry. The 314 donor came to Moreno Ranches as a leading private purchase; the progress and greatness has only just begun. Her progeny that have sold have commanded top prices and interest has been very high by some of the most noted cattlemen in the breed.

Consigned by Ganaderia San Martin



JDH Mr Kabram Manso



+GS MS Mulhim Manso 314

# 14 Three RSF Embryos

Selling one package of three RSF embryos.

MORENO MR. ROCKY ELMER	+JDH MR ELMO MANSO	+JDH SIR LAWFOORD MANSO	SIRE	DAM
	+HK MS PASSPORT 557	\$JDH LADY ELLIS MANSO	BW	3.3 3.7
		+HK PASSPORT	WW	27.4 18.3
		HK MS. AMERICA 901	YW	45.5 28.0
MISS B-F 139/9	+MR H RED RHINO 765	+MR. 3H X-RAY 825	MILK	1.1 7.0
	+5M MISS MARCIA	+MISS 3-S KELLI 848		
		+BB MR STING-RAY		
		SRS MISS DALLAS		

This will be the last opportunity in the United States to purchase embryos from Miss B-F 139/9. Their dam is Miss B-F 139/9, a daughter of +Mr. H Red Rhino 765 and a full sister to the two-time National Champion and two-time International Champion female +CT Lady Rhineaux Ray 8/9 for Circle T Cattle. This big time Moreno Ranches donor continues to amaze everyone at the ranch with her producing ability. Miss B-F 139/9 has surfaced as the leading donor who continues to impress us with her progeny time and time again. There were a total of 12 daughters of 139/9 that highlighted the Moreno Ranches All American II Sale and sold for an average of \$8308. If you want to create show females that will capture the attention of any cattleman, then consider these three embryos. These embryos are sired by a full brother to Moreno Ms. Lady Rumbera 710, the 2017 ABBA Red Show Cow of the Year. Both the sire and dam of these future calves are the epitome of greatness in terms of structure, heaviness of bone, ease of flesh, extremely deep in their flank while still maintaining plenty of power and muscle. Buy with the utmost confidence when considering these future calves.

Consigned by Ganaderia San Rafael



Moreno Mr. Rocky Elmer



Miss B-F 139/9



# EMBRYOS



Moreno Mr. Rocky Elmer



Ms SS 164



+Mr 3H X-Ray 825



TJF Miss Tunner 284/0

## 15 Two Conventional Embryos

Selling one package of two conventional embryos.

+JDH MR ELMO MANSO  
**MORENO MR. ROCKY ELMER**  
+HK MS PASSPORT 557  
  
+BB MR STING-RAY 10/0  
**MS SS 164**  
+MS SS 126

+JDH SIR LAWFOED MANSO  
\$JDH LADY ELLIS MANSO  
+HK PASSPORT  
HK MS. AMERICA 901  
+MR. 3H X-RAY 825  
BB MS "ON TARGET" 132/8  
+MR. V8 287/5  
JJ MS CINCO DIDOR 271

	SIRE	DAM
<b>BW</b>	3.3	3.9
<b>WW</b>	27.4	22.3
<b>YW</b>	45.5	34.9
<b>MILK</b>	1.1	7.0

This will be the last opportunity in the United States to purchase embryos from MS SS 164.

These embryos are sired by a full brother to Moreno Ms. Lady Rumbera 710, the 2017 ABBA Red Show Cow of the Year. Both the sire and dam of these future calves are the epitome of greatness in terms of structure, heaviness of bone, ease of flesh, extremely deep in their flank while still maintaining plenty of power and muscle.

Their dam is Ms SS 164, the proven Red Brahman donor cow that is sired by the Register of Renown BB Mr Sting-Ray 10/0. She represents one of the strongest lines of cattle that our breed has to offer. Her dam is sired by the prominent sire, +Mr. V8 287/5 ("Superstroke"). There has been no other bull with as much influence and domination in the U.S. and International shows as him. He was undefeated five years in a row in the Get-Of-Sire at the Houston International show. He is noted as being one of the most widely used sires of all time. The first set of embryo calves from Miss SS 164 are on the ground now and are certainly turning heads as they are getting older.

*Consigned by Ganaderia San Rafael*

## 16 Two Conventional Embryos

Selling one package of two conventional embryos.

ARROW J MILLMARONE 925  
+MR. 3H X-RAY 825  
+MISS 3H 290  
  
+TJF MR. SMOKIN GUN  
**TJF MISS STUNNER 284/0**  
MISS 3-S 333

ARROW J MILLIONAIRE 503  
BUDD'S MISS MAYRO 84/3  
+HK MR. AMERICA 435/2  
Z-BAR BRAZOS QUEEN 890  
+MR WINCHESTER MAGNUM 999  
+MS JR RED LOTTO  
MR. 3-S 832  
5M MISS HURRICAN MUCHO

	SIRE	DAM
<b>BW</b>	2.4	4.6
<b>WW</b>	20.2	23.5
<b>YW</b>	31.2	37.5
<b>MILK</b>	8.5	7.1

This will be the last opportunity in the United States to purchase embryos from TJF Miss Stunner 284/0.

TJF Miss Stunner 284/0 is a known daughter of the legendary TJF Mr. Smokin Gun sire. She is an elite red donor that has earned her right to be listed as one of the finest donors in the strong lineup at Moreno Ranches. Just a quick look at her picture and you realize she is really something special. To find a red Brahman donor cow that has so much rib shape, volume, capacity and performance is hard to find. She is so big footed, sound and soft in her pasterns and very structurally correct. A true beef machine!

X-Ray is a bull that has been used successfully around the world in addition to making his impact in the United States. X-Ray represents a proven lineage with iconic sires in his pedigree, including +HK Mr America 61/9 (The Millionaire) and +HK Mr. America 435 (Magnum). X-Ray's dam, +Miss 3H 290 (Miss Ray), was Sam Harris' 3H Ranch favorite cow. We love his prominent stance, his muscle pattern, clean sheath, fluidity of movement and flawless design.

*Consigned by Lanier Brahams*



17 Three Conventional Embryos

Selling one package of three conventional embryos.

MR. 'RUFUS' FONTENOT 333	MISS FONTENOT 937 (937)	HK BLUEPRINT	SIRE	DAM
	MISS FONTENOT 942 (942)	MISS FONTENOT 872	BW	2.3 3.3
+HK PASSPORT		+MR BF IRON MAN 55/7 ET	WW	16.9 20.3
		MISS FONTENOT 67	YW	27.1 32.4
+HK MS PASSPORT 557		MR. 3X RED DYNASTY 75	MILK	5.6 9.0
	HK MS. AMERICA 901	HK MILLIONAIRS 359/2		
		HK MR. AMERICA 652/2		
		HK MISS AMERICA 1/322		

This will be the last opportunity in the United States to purchase embryos from +HK Ms Passport 557.

The sire to these embryos, Rufus, has been said by many to be one of the very best red Brahman bulls to ever step foot in the show ring. We firmly believe he can make a huge impact with the flawless traits that he has. He very confidently walked into the prestigious 2016 ABBA International show and dominated as well as captivated the audience and the three judges. He is massive in his foot size, soft in his pasterns and very fluid in his movement. This stout made and heavily muscled beef bull is extremely level and strong down his top and for sure out through his hooks to pins. We appreciate his depth of flank, volume and capacity. Only one bull of this level comes along in a lifetime and we are more than excited to see the uniformity of his calf crop as time goes on.

The dam to these embryos is even more impressive having recently produced the 2017 International Champion Red Bull (LB Myles) and the 2017 ABBA Red Show Cow of the Year (Rumbera 710). We are certain this heifer will be a big hit on sale day. If you are in need of calves that will highlight your program with a desirable conformation and prominent genetic, then consider these exclusive embryos.

Consigned by Ganaderia San Rafael

18 Three RSF Embryos

Selling one package of three RSF embryos.

+CJV MR BILLY BOB MANSO	+MR H MADDOX MANSO 684	SIRE	DAM
	+LADY H MARINA MANSO 792	BW	0.1 0.1
TTT SUVA BOB MANSO 786	JDH ECHO'S LAIR MANSO	WW	3.2 2.1
	TTT MS SUVETTE MARTI 374	YW	23.4 16.8
+TTT SUVA'S ECHO LADY 700	+BNA THE DEACON MANSO 253	MILK	39.9 29.3
	JME US LEXOR MANSO 71		
MORENO MS. POLLED PAULINA (P)	JME MS REM PONCRATA474		
	+MR H MADDOX MANSO 684		
ZE LADY MADDOX COPANO 21	MS SS LIBERTY COPANO		

Here is your chance to invest in embryos on the 2014-2015 ABBA Show Bull of the Year. He has earned the reputation and respect of so many noted cattlemen. He literally represents to the highest degree all of the breed's most important traits.

"Suva Bob" is sired by CJV Mr. Bill Bob Manso 16/8, a Heritage Cattle Company bred bull sired by "Maddox" and out of a top "Double Take" daughter owned by the Valenta Family. On the bottom side of his pedigree, the TTT 700 cow is a top young female at the Moreno Ranches program, which comes as no surprise. She's sired by our top JDH Echo 237 son and out of a +JDH Martin Manso daughter that goes back to our famous +TTT 758 cow that produced champion after champion for Tic Tac Toe Ranch in the late 1990's and early 2000's.

Paulina is sired by JME US Lexor Manso 71, the polled sire who won numerous titles before his accidental death. On the maternal side of her pedigree, she goes back to +Maddox 684 and a Sagraera bred female that was sold in the 2007 International Sale and has the influence of the JDH 181/1 cow, the grand dam to the CF 230 and SS 230 females that were both Reserve International Champions. In addition to her proven pedigree and outstanding eye appeal she offers a performance aspect that is second to none ranking in the top 20% of the breed for seven traits, including the valuable growth and carcass traits. The genetics found within these embryos will be astounding and if they can only grow up and look like their momma, it would be nothing but fabulous.

Consigned by Lanier Brahmans



Mr. 'Rufus' Fontenot 333



+HK Ms Passport 557



TTT Suva Bob Manso 786



Moreno Ms. Polled Paulina



## SEMEN



Mr B-F 255/1

JDH Mr. Manso  
991/4TTT Mr. Mayro  
Suva 845TTT Mr. Suva  
Martin 363BB Special  
Effort 666JDH Martin  
Manso 879/3

## 19 Mr B-F 255/1

ABBA# B 899489 | 04.18.11 | B-F 255/1 | Gray

S: +MR KC JUSTICE MANSO 847 D: LADY H ELLA MANSO 876/6

**Offering 5 Units.** 255/1 is one of the most sought after sons of Mr KC Justice Manso 847 and from the leading donor at Broadhead Farms, MS Lady H Ella Manso 876/6. Moreno Ranches showed and campaigned him throughout the country. We are offering you an opportunity to acquire 10 units on this up and coming herd sire that is now being used in the Lanier, RW and Moreno programs. *Consigned by Arrow B Cattle Co.*

BW 1.3  
WW: 12.7  
YW: 25.3  
MILK: 5.5

## 21 JDH Mr. Manso 991/4

ABBA# B 859530 | 09.06.06 | 991/4 | Gray

S: +MR WINDY HILL 89/3 D: JDH LADY MANSO 585/2

**Offering 5 Units.** A tremendous young herd sire that combines genetics and performance in one package with the rare added bonus of breeding gray on gray and cherry red on red, 991/4 is very dark pigmented that stands on very correct feet and legs. He is table top level from his hump to his tail setting with more than adequate muscling. His calves are extremely thick with lots of bone and very clean in their makeup. When bred to red cows he is consistently producing dark cherry red calves. *Consigned by Lanier Brahman*

BW 1.7  
WW: 14.6  
YW: 23.4  
MILK: 5.0

## 23 TTT Mr. Suva Martin 363

ABBA# B 860159 | 10.15.06 | 363 | Gray

S: +JDH MARTIN MANSO 879/3 D: CAK CROWN BO DIDOR 658

**Offering 5 Units.** One of the most notable sons of +JDH Martin Manso 879/3, "Big Boy" is living proof that truly outstanding genetics perpetually breed on and on. He has been labeled a "cowman's bull" because of his abundance of natural muscling and excellent feet and legs. He possesses the spring of rib and volume that is necessary for a sire to maintain his operating weight and performance ability. *Consigned by Watts Ranch*

BW 1.4  
WW: 14.6  
YW: 26.6  
MILK: 6.6

## 25 JDH Martin Manso 879/3

ABBA# B 818454 | 10.06.01 | 879/3 | Gray

S: (+)JDH MR. MANSO 449/1 (449/1) D: JDH LADY JOCKO MANSO 425/2

**Offering 10 Units.** Sired by (+) Mr. Manso 449/1 and the senior herd sire for Tic Tac Toe Ranch and Lindley Brahman, Martin has made a phenomenal impact on the Brahman breed. Inducted into the Register of Renown before his first calf crop started their second show season, he was the youngest herd sire to enter the Register of Renown. Martin calves are distinct with their great disposition, length, strong toplines, thickness and soundness. *Consigned by Watts Ranch*

BW 3.9  
WW: 25.8  
YW: 44.2  
MILK: 6.9

## 27 WR Mr. Suva Jr 315

ABBA# B 346136 | 05.05.81 | 315 | Gray

S: (+)WR MR. SUVA 203 (203RT) D: +MISS MANSO LEONCO 695

**Offering 10 Units.** One of the most prolific herd sires ever produced at Watts Ranch and Tic Tac Toe Ranch. If you are looking for a complete outcross for some of today's most popular genetics, then look no further, "Suva Jr" 315 is still producing exceptional progeny across the world. +WR Suva Jr 315 is sired by the legendary (+)WR Suva 203, the #1 sire in ABBA's Register of Renown. The signature +WR Suva Jr 315 daughters are known for their strong maternal ability and the cornerstone for many progressive Brahman herds. *Consigned by Watts Ranch*

BW 2.7  
WW: 19.9  
YW: 30.6  
MILK: 6.4

## 20 HK Magnetic 630

ABBA# B 841547 | 05.22.04 | 630 | Red

S: HK MAGNETIC (336) D: HK MS. PASSPORT 313

**Offering 5 Units.** HK Magnetic 630 is a deep-bodied, dark pigmented bull with lots of capacity. He combines thickness, mass, volume and balance on a set of structurally correct and heavy-boned feet and legs. 630 also has a pedigree second to none with legends of the breed such as HK Blue Blood and +HK Mr. America and twice listed +HK Passport 777. *Consigned by Lanier Brahman*

BW 4.6  
WW: 22.9  
YW: 34.7  
MILK: 9.0

## 22 TTT Mr. Mayro Suva 845

ABBA# B 576963 | 06.12.85 | 845 | Gray

S: +MN MRL RED MAYRO 257/2 D: +TTT MISS SUVA IMP 663

**Offering 5 Units.** Register of Renown! Rambo 845 has been in our breeding program for many years. He was a champion many times during his show career. He continues to produce breeders all over the world tremendous offsprings. His progeny will excel with lots of thickness, strong tops, and good hump placement. His daughters are excellent milkers with tight udders. *Consigned by Watts Ranch*

BW 3.0  
WW: 12.5  
YW: 23.3  
MILK: 10.2

## 24 BB Special Effort 666

ABBA# B 859451 | 11.16.06 | 666 | Red

S: +MR WINCHESTER MAGNUM 999 D: BB SHE'S GOT THE LOOK 75

**Offering 5 Units.** This top young red sire has been destined for greatness since selling as a calf at the 2008 World Brahman Congress for \$25,000. Special Effort's offspring have taken the show ring by storm. These winners include Moreno Ms. Lady Regal 740, who was the Reserve Calf Champion Female at both the San Antonio and International shows. His pedigree is equally impressive - combining two of the most influential bulls in recent times with +Winchester Magnum 999 and +Mr 3X He's Got The Look 40/2. *Consigned by Mi Tierra Ranches*

BW 3.7  
WW: 13.9  
YW: 23.4  
MILK: 7.7

## 26 WR Rex Suva 204

ABBA# B 305531 | 04.01.18 | 204 | Gray

S: +MR V8 763/1 D: +HCK PRINCESS VAL SUVAN

**Offering 10 Units.** A maternal brother to the legendary (+)WR Mr Suva 203, WR Rex V Suva 204 was a bull that unfortunately lived in the shadows of his older brother. Take special note to 204's pedigree that has been desired by Brahman enthusiasts for decades. Many of today's most desired genetics go back to the 761/1 bull. 204's dam, +HCK Princess Val Suvan, has established both Watts Ranch and Tic Tac Toe Ranch. *Consigned by Watts Ranch*

BW -2.5  
WW: -2.1  
YW: -4.4  
MILK: 14.2

## 28 Mr Slugger 12/7

ABBA# B 869929 | 09.13.07 | 12/7 | Gray

S: JDH MR DEEDS MANSO 53/4 D: JDH LADY NISSAN MANSO 898/3

**Offering 5 Units.** A bull with an outstanding pedigree. His sire is the JDH Mr. Deeds Manso 53/4 that is an outstanding herd sire for the J.D. Hudgins ranch. On the bottom side of 12/7 pedigree is JDH Lady Nissan Manso 898/3. This cow is presently being used as a donor cow at the Ganadera Karla Mary Ranch. The genetics in 12/7 pedigree are powerful with names such as JDH Prescott, JDH Lady Ellis, JDH Liberty, and JDH Remington just to name a few. *Consigned by Lanier Brahman*

BW 2.9  
WW: 20.8  
YW: 34.3  
MILK: 2.1





WR Rex Suva 204



Mr Slugger 12/7



Mr. KC Justice Manso 847



HK Magneate 607

## 29 Mr. KC Justice Manso 847

ABBA# B 848558 | 04.21.05 | 847 | Gray

S: +BNA THE DEACON MANSO 253 D: +JDH MISS AIDA MANSO

BW 2.0  
WW: 10.8  
YW: 19.9  
MILK: 3.9

**Offering 5 Units.** With genetics from both the V8 and Manso lines, Bennett Farms meant business when breeding Mr. KC Justice Manso. A long bodied straight lined bull, 847/5 will certainly add size, performance and profit to any herd. Make this bull an asset to your herd by investing in these units. No restrictions and AI certificates available from the consignor. *Consigned by Lanier Brahman*

## 31 HK Polo 757 (P)

ABBA# B 858252 | 06.14.06 | 757 | Red

S: MR. 3H POLO 628 P (628) D: HK MS. AMERICA 280

BW 0.6  
WW: 10.6  
YW: 18.1  
MILK: 6.9

**Offering 5 Units.** A smooth polled red Brahman bull that produces high percentage of smooth polled offspring. Very little semen left on this bull. He is smooth polled - NO SCURS. *Consigned by Jose Luis Ponce*

## 33 JDH Goudeau Manso 174/0

ABBA# B 892664 | 04.21.10 | 174/0 | Gray

S: JDH MR. MANSO 362/1 D: JDH LADY MANSO 625/3

BW 3.9  
WW: 22.3  
YW: 34.1  
MILK: 8.8

**Offering 5 Units.** Here is a sire with a complete outcross pedigree to most established lines that stems from a very maternal line of cow families. He is a powerful performance bull and his progeny are at the top in terms of weaning and performance. He is massive in terms of performance, super sound in his structure and very prominent in his stance. *Consigned by Tranquility Ranch*

## 35 Mr 3X "The Herd Bull" 20/3

ABBA# B 699737 | 01.04.93 | 20/3 | Red

S: +3X TORGSONS RED DYNASTY D: MISS 3X RED DYNASTY 10/8

BW 1.8  
WW: 7.4  
YW: 17.4  
MILK: 7.9

**Offering 5 Units.** "The Herd Bull" is a truly amazing beef bull ... he has it all stacked in his favor and stands for exactly what we need to create in the Brahman breed. Of the three brothers of his time (20, 30 and 40) he was considered by many to be the most prolific herd sire of the three. His sire, +3X Torgsons Red Dynasty, is a creation of Emily Diahl. He combines the best of pedigrees of the 80 and 90's. *Consigned by Tranquility Ranch*

## 30 HK Magneate 607

ABBA# B 838035 | 01.17.04 | 607 | Red

S: HK MAGNETIC (336) D: HHK MS. PASSPORT 307

BW 3.7  
WW: 19.1  
YW: 28.8  
MILK: 10.0

**Offering 2 Units and 2 Certificates.** Magneate is a pure reflection of his pedigree. He is what a bull should be. Magnum, Millionaire, Passport, Mr. America, Matriarch, and Blue Blood are all ancestors of this powerful sire. Depth of body, length, width, a level top, soundness of travel and a superior bone and muscle composition set HK Magneate 607 apart from the status quo. He is a sire that produces as well as he looks and is a compliment to the effort of all the breeders that use him. Use Magneate with confidence that he was bred to be a herd sire. *Consigned by Jose Luis Ponce*

## 32 HK Blueprint 575

ABBA# B 832918 | 05.21.03 | 575 | Red

S: HK BLUE BLOOD 986 D: HK MILLIONAIRIS 359/2

BW 1.6  
WW: 13.0  
YW: 22.5  
MILK: 6.0

**Offering 2 Units and 2 Certificates.** Maternal half brother to HK Passport 777, sire of HK Arquitecto producing elite progeny around the world. *Consigned by Jose Luis Ponce*

## 34 BB Mr Juancito 477/7

ABBA# B 859452 | 01.02.07 | 477/7 | Red

S: HK PASSPORT 599 D: BB MS SPECIAL X 286

BW 2.5  
WW: 18.3  
YW: 29.3  
MILK: 9.0

**Offering 5 Units.** Juancito is a red Brahman herd sire that has continued to amaze us in the breed with his progeny and the amount of performance they have. 477 is a son of HK Passport 599 from a daughter of Mr. 3H X-Ray 825 He is a very production oriented bull that has tremendous volume and pounds in performance. There is no doubt that he transfers that performance on to his offspring as noted with his daughter. *Consigned by Mi Tierra Ranch*

## 36 #GRDA Mr Nathan Del Alba 168/3

ABBA# B 935401 | 12.20.13 | 168/3 | Gray

S: JDH SIR CORONA MANSO D: (MISS ROSA DE ALBA PRIMOROSA)

BW -  
WW: -  
YW: -  
MILK: -

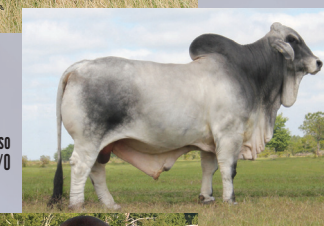
**Offering 5 Units.** This known son of JDH Sir Corono Manso is from a Woodson bred cow. He has a pedigree that is second to none. Imported from Mexico this major herd sire is athletic in his structure, fluid in his movement and has an awesome pigment. This would be one of the only Corono sons to invest in and to influence your program. *Consigned by Lanier Brahman*



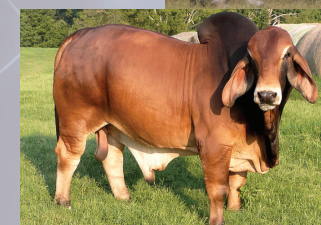
HK Polo 757



HK Blueprint 575



JDH Goudeau Manso 174/0



BB Mr Juancito 477/7



Mr 3X "The Herd Bull" 20/3



#GRDA Mr Nathan Del Alba 168/3





# *the Magic City Sale*

**APRIL 13, 2018**

7:00 p.m. at the Tropical Park Ronald Reagan  
Equestrian Center, Miami, Florida

Join us in Miami ...  
**GATEWAY  
TO THE  
WORLD**